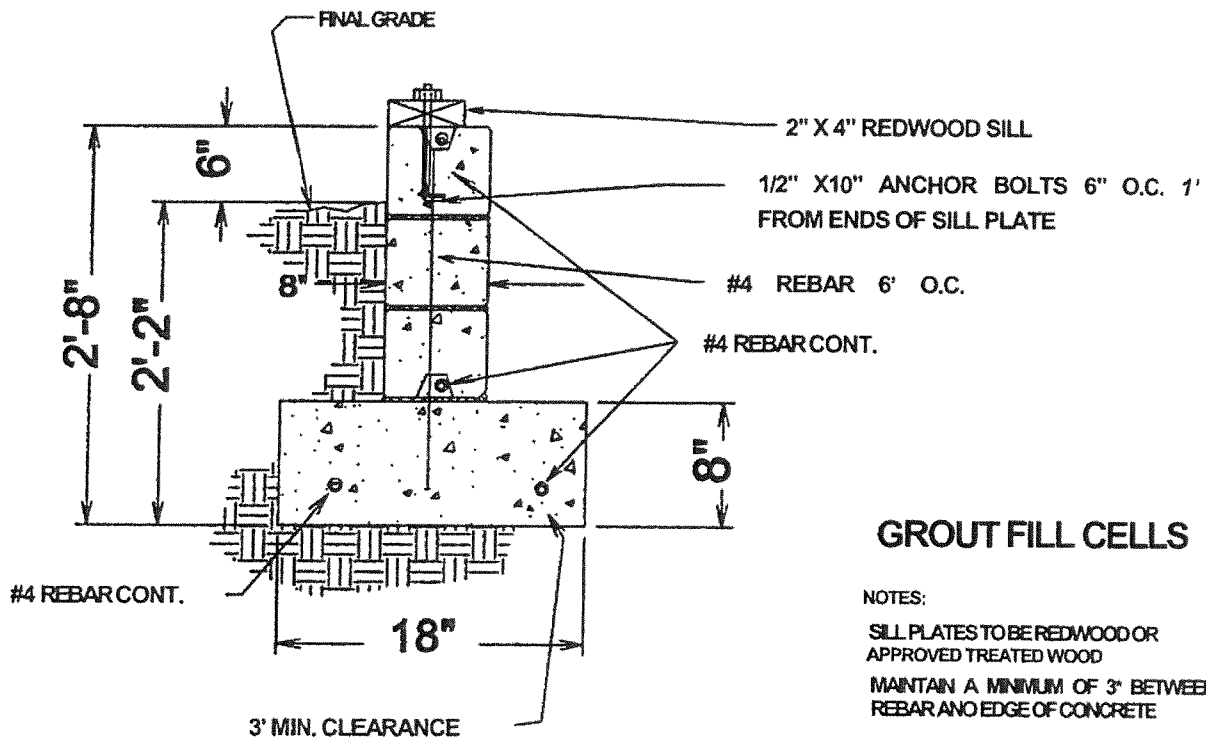


# MONTROSE COUNTY FOUNDATION REQUIREMENTS

## BLOCK STEMWALL



### GROUT FILL CELLS

#### NOTES:

- SILL PLATES TO BE REDWOOD OR APPROVED TREATED WOOD
- MAINTAIN A MINIMUM OF 3" BETWEEN REBAR AND EDGE OF CONCRETE
- SLOPE GROUND AWAY FROM STEMWALL AFTER INSTALLATION
- GROUT FILL BLOCKS

**NOTE:** All footers shall be placed on solid undisturbed soil.

-All organic material shall be removed before placement of footer.

-Footers are NOT allowed to be placed on earthen fill unless fill material has been designed, tested, and approved by a licensed engineer registered in Colorado.

-The building official may, at his discretion, require an engineer to test, design, inspect, and certify the soils and foundation.