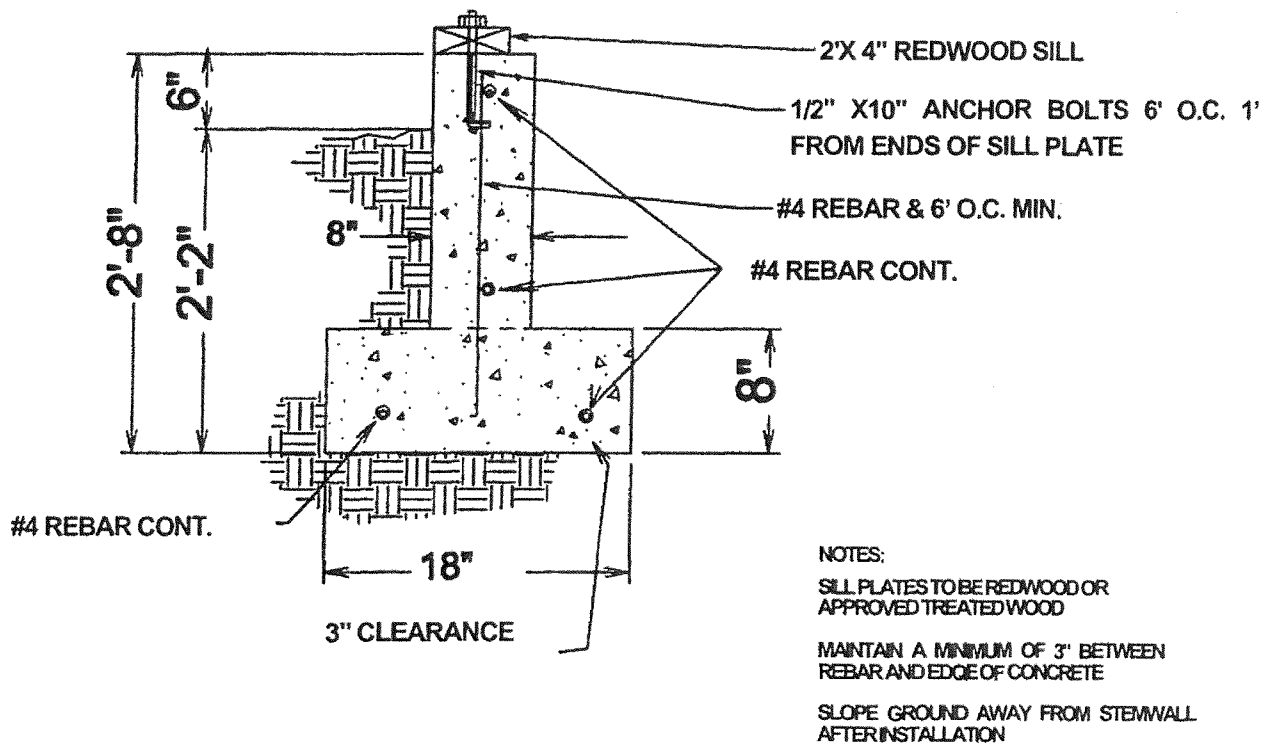


MONTROSE COUNTY FOUNDATION REQUIREMENTS

POURED STEMWALL



NOTE: All footers shall be placed on solid undisturbed soil.

-All organic material shall be removed before placement of footer.

-Footers are NOT allowed to be placed on earthen fill unless fill material has been designed, tested, and approved by a licensed engineer registered in Colorado.

-The building official may, at his discretion, require an engineer to test, design, inspect, and certify the soils and foundation.